

# LACE REPAIR

by Anna Dalvi

## HOMEWORK

You can use any size yarn, any brand, with appropriate needles.

Here are some suggestions for yarn/needle combinations, but feel free to use any stash yarn you may have. I recommend staying away from mohair and alpaca, for the class. I also recommend choosing a solid colour, not too dark, as it's a lot easier to see.

### YARN/NEEDLE SUGGESTIONS:

option 1 (fingering weight - approx needle size: 4.5 mm/US 7):

Palette from Knit Picks [100% wool; 231 yds/211 m per 50 g]

Regia 4-ply [75% wool, 25% nylon; 230 yds/210 m per 50 g]

option 2 (lace weight - approx needle size: 3.5 mm/US 4)

Shadow from Knit Picks [100% merino; 440 yds/402 m per 50 g]

Lace from Malabrigo Yarn [100% merino; 470 yds/430 m per 50 g]

option 3 (DK - approx needle size: 5.0 mm/US 8)

Swish DK from Knit Picks [100% merino; 123 yds/112 m per 50 g]

## HOMEWORK:

Please knit the following 36 rows (ending with a WS row). Leave the stitches on the needles

CO 2 sts.

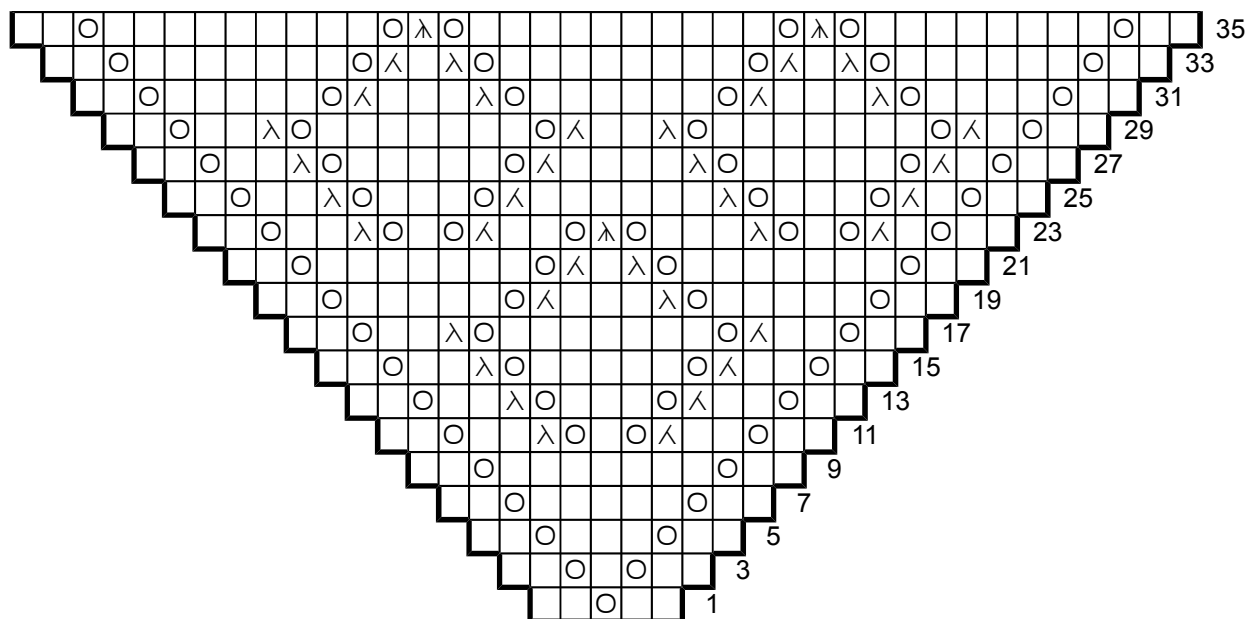
Set-up row 1: K2.

Set-up row 2: Kfb, kfb.

Set-up row 3: K4.

RS rows: Charted.

WS rows: K2, purl to last 2 sts, k2.



## LEGEND

- – k
- – p
- ∧ – k2tog
- λ – ssk
- λ – sl1-k2tog-ssso
- – yarn over

## ABBREVIATIONS

- BO – bind off
- CO – cast on
- k – knit
- p – purl
- pssso – pass slipped stitch(es) over
- rn – right needle
- RS – right side (odd rows)
- sl – slip
- WS – wrong side (even rows)
- yo – yarn over