

# CABLE REPAIR

by Anna Dalvi

## HOMEWORK

You can use any size yarn, any brand, with appropriate needles.

Here are some suggestions for yarn/needle combinations, but feel free to use any stash yarn you may have. I recommend staying away from mohair and alpaca, for the class. I also recommend choosing a solid colour, not too dark, as it's a lot easier to see the stitches.

## YARN/NEEDLE SUGGESTIONS:

option 1 (worsted weight - approx needle size: 5.0 mm/US 8):

Classic Wool Worsted from Patons [100% wool; 210 yds/192 m per 100 g]

option 2 (DK - approx needle size: 4.0 mm/US 6)

Classic Wool DK Superwash from Patons [100% wool; 125 yds/114 m per 50 g]

## SUPPLIES FOR THE CLASS

yarn

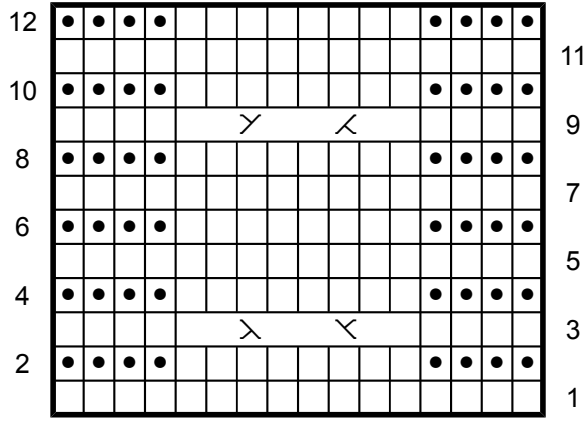
appropriate size needles

cable needle

HOMEWORK 1

Please knit the following 12 rows (ending with a WS row). Leave the stitches on the needles

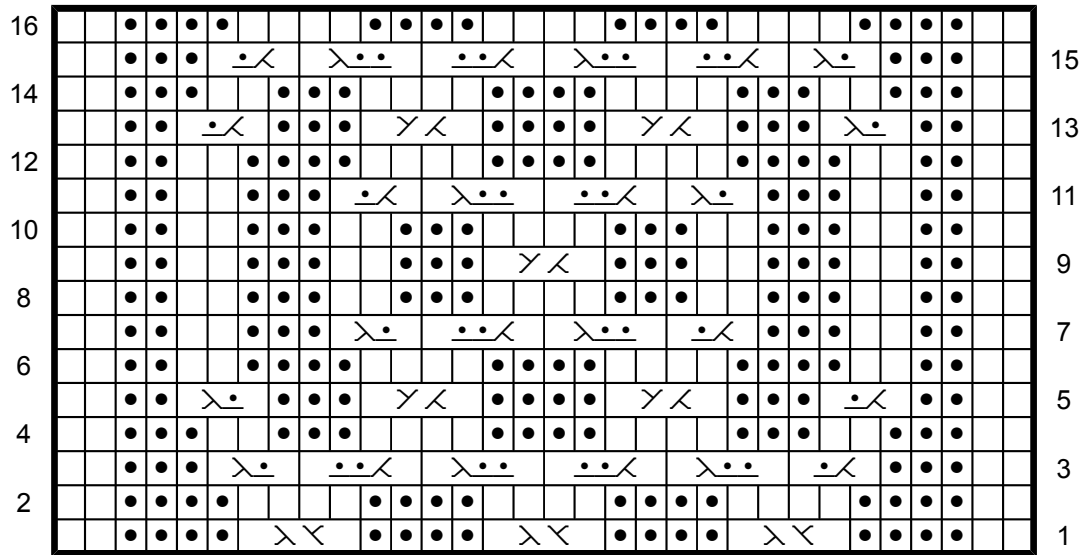
CO 16 sts.



HOMEWORK 2

Please knit the following 16 rows (ending with a WS row). Leave the stitches on the needles

CO 32 sts.



## LEGEND

□ – knit on RS, purl on WS  
● – purl on RS, knit on WS  
>< – C4F  
>< – C4B  
> < – C8F  
> < – C8B  
>• – T3F  
•< – T3B  
>•• – T4F  
••< – T4B

## ABBREVIATIONS

CO – cast on  
k – knit  
p – purl  
  
cn – cable needle  
  
RS – right side (odd rows)  
WS – wrong side (even rows)

C4B: Sl 2 st onto cn and hold at back of work, k2 from left needle, k2 from cn

C4F: Sl 2 st onto cn and hold at front of work, k2 from left needle, k2 from cn

C8B: Sl 4 st onto cn and hold at back of work, k3 from left needle, k4 from cn

C8F: Sl 4 st onto cn and hold at front of work, k3 from left needle, k4 from cn

T3B (Twist 3 Back): Sl 1 st onto cn and hold at back of work, k2 from left needle, p1 from cn

T3F (Twist 3 Front): Sl 2 st onto cn and hold at front of work, p1 from left needle, k2 from cn

T4B (Twist 4 Back): Sl 2 st onto cn and hold at back of work, k2 from left needle, p2 from cn

T4F (Twist 4 Front): Sl 2 st onto cn and hold at front of work, p2 from left needle, k2 from cn